

Backflow assembly testing must be completed only by a certified backflow tester.

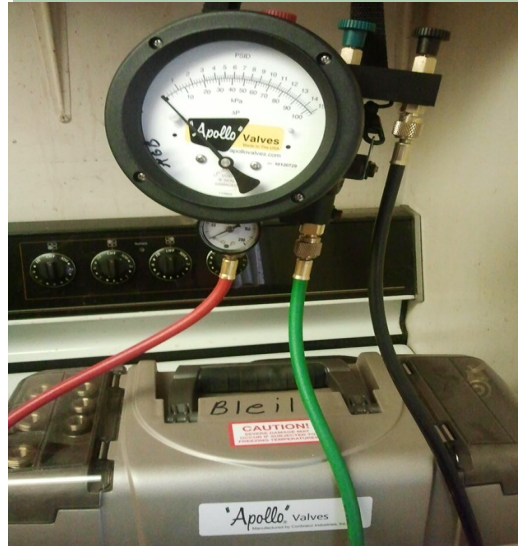
All Seasons Landscaping Inc. has four Certified backflow testers on staff to serve your needs. With offices in Bellevue, Twin Falls and a tester based out of Rexburg we service the Wood River & Magic Valleys as well as Eastern Idaho. Testing services include testing and submission of paperwork to the proper authority (municipal and or state).

We also can repair and certify your repaired device for an additional fee. Minor repairs will be completed at the time of test so no additional trip charge will be incurred to pass the test. For any major repairs needed to pass the test., we will contact you with a proposal for your approval. Call today for an appointment. 208-788-3352



DID YOU KNOW?

Idaho and Federal Law Requires all Backflow Assembly Devices to be Tested Annually to protect domestic or city water systems from potential contamination.



ALL SEASONS LANDSCAPING INC
PO Box 865
Bellevue, ID 83313

Phone: Sun Valley 788-3352
Phone: Twin Falls 733-6655
Fax: 788-0274
E-mail: backflow@allseasons.info



BACKFLOW ASSEMBLY TESTING

Important Information about backflow prevention and your responsibilities as a property owner.



ALL SEASONS LANDSCAPING INC
Grow with us!

Tel: Sun Valley 788-3352
Tel. Twin Falls 733-6655
www.allseasons.info



WHAT IS BACKFLOW?

Water systems depend on water pressure to keep water flowing in the proper direction through pipes and hoses.

However, anything that causes a drop in water pressure can create a reverse flow, such as from a home's plumbing system back into the homeowner's well or the public water system. This is called backflow.

What Causes Backflow?

Two conditions can cause backflow:

Backpressure occurs when the pressure in the home's pipe or hose is greater than the pressure coming in.

Backsiphonage occurs when there is a negative pressure in the home's pipes or hoses.

Why is Backflow Prevention Important?

Your well or the community's water supply can become unsafe when backflow occurs and the system comes in contact with contaminants through backflow.

In fact most cross connection problems usually involve a normal garden hose. Putting your garden hose into a pond to fill it or connecting it to a plant fertilizer or bug spray unit could cause a potentially hazardous back flow. If your property has an outside water sources, you are required by Idaho State law to have backflow prevention devices in use and to have them tested annually.

What are the common backflow devices used in our area?

Double Check Valves and Vacuum Breakers are the two most common devices used in our area of service. There are pictures of both in this brochure.

Responsibilities and Penalties

Any irrigation system not connected to pressurized irrigation systems or fed directly from irrigation canal water has a backflow device which by state law should be tested annually.

Most municipalities require this test to be completed by the 15th of June each year for homeowners and by May 15th for commercial/industrial sites with backflow devices. Failure to have this test completed by a licensed tester on time can cause your water to be turned off if it is on a municipal system.

Any backflow devices missing serial numbers or model numbers must be replaced. Devices found to be improperly installed will have to be brought up to code prior to testing. Proper installation includes a 1 foot clearance between the lowest portions of the assembly and the floor or grade.

When your test is completed we will send you and the local authorities a copy of of your results from the test to show your compliance with state and local codes.

Please visit our website www.allseasons.info for much more information on backflow testing.

ALL SEASONS LANDSCAPING is a design build landscape construction firm that offers full service maintenance , irrigation repairs, backflow testing, fertilization, tree care etc. to both commercial and residential customers. Call us at 208-788-3352

